

McCutchanville Community Church

Pictures and Paintings page 1 of 19 Printed 15 September 2005



1. WINTER LANDSCAPE
ARTIST: NELLIE McCUTCHAN WITTINGHILL
1868-1942 Daughter of Charles R. & Mary McCutchan. Grew up in this community and was a member of this Church. Married Dr. James Logan Whittinghill who practiced medicine in McCutchanville for a number of years before moving to Evansville.
Original oil.
Painted around 1890.
size: 20" x 16"

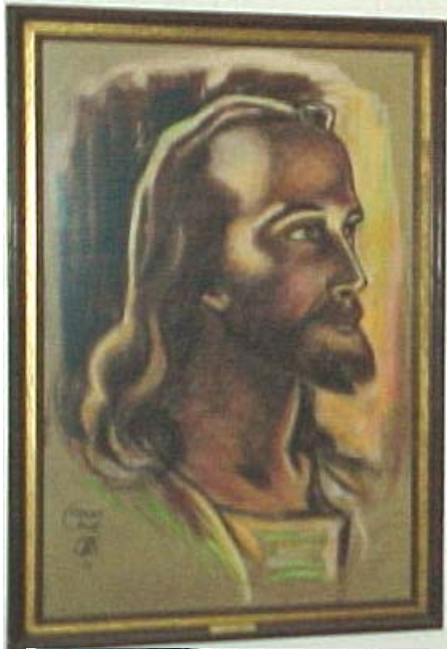


2. FOREST SCENE
ARTIST: PEDRO ESPINO KRAUSE
Born in Mexico 1906 - Died in St. Louis 1978
Krause came to Evansville when a small boy. Attended Evansville Grade schools and the old Evansville High School. Set out to be an artist. Protégé of Nelson Wilson. Because of his glorious singing voice he went to Chicago and New York for voice training and followed the concert circuits across America and Mexico for a number of years. Left the concert stage after World War II and settled in St Louis wher he worked as a commercial artist.
size: 44 1/2" x 24 1/2" Oil



3. CROSS STICH PICTURE
by: EILEEN FALKENSTEIN 1985
size: 17" x 13 1/2 "

McCutchanville Community Church
Pictures and Paintings page 2 of 19 Printed 15 September 2005



4. HEAD OF JESUS
ARTIST "HOWDY" ELLIS
original chalk drawing 1970
size: 35 1/2" x 54"



5. PROTRAIT OF MAN IN ACADEMIC ROBE
Dr. Fred E. Harris
ARTIST: HOWARD E. OAGLEY
Oil
Size: 21 1/2" x 26"
(frame loose from picture)



6. PETUNIAS
ARTIST: NELLIE McGEE 1907-1983
framed watercolor
size: 13 1/2" x 17"

McCutchanville Community Church
Pictures and Paintings page 3 of 19 Printed 15 September 2005



7. MAN IN ROW BOAT
ARTIST: NELSON WILSON 1880- 1950
Original oil Old Dam in New Harmony
repaired and applied to masonite in July 1989
size: 20" x 14"



8. SAW MILL AND STEAM ENGINE
ARTIST: PANSY BLUME 1936
Oil
size: 19 1/2" x 15 "



9. WINTER BARN
ARTIST: JERRY BAUM
Dec. 9, 1967
Water Color
size: 22 1/2" x 16 1/2 "

McCutchanville Community Church

Pictures and Paintings page 4 of 19 Printed 15 September 2005



10. LARGE PICTURE OF JESUS IN PRAYER
ARTIST: J.R. MASS
Gift from Mamie H. Grote
(beautiful gold frame)
size: 36" x 45 1/2 "



11. OLD BRIDGE ON FURLICK CREEK ON HEDDON RD.
This old bridge was replaced by a new span several years ago.
ARTIST: KENNETH McCUTCHAN
Size: 16" x 12" Oil



12. NEGLEY'S MILL ON PIGEON CREEK
ARTIST: BESSIE MOFFETT BROWNING
1875-1950
Daughter of Mary Elizabeth Moffett and William Browning. Former member of this church. Moved to California.
Size: 19 1/2" X 15 1/2" Oil

McCutchanville Community Church

Pictures and Paintings page 5 of 19 Printed 15 September 2005



13. WINTER FIELD
Watercolor by JOHN McIVER (contemporary)
John McIver was born in Jacksonville, Florida, but lived in Evansville from 1967 to 1975. He was exhibited nationally and won many awards. Currently living and painting in North Carolina.
This Painting was inspired by walks the artist took on Ken McCutchans farm
size: 21 ½” x 14”



14. MY OLD HOOSIER HOMESTEAD
ARTIST: JERRY BAUM
Watercolor 1973
size: 27 1/2 " x 14 1/2 "



15. THE BEECHES
Watercolor by MARY C. JOHNSTON (1872-1966)
Mary C. Johnston was Annie Fellows Johnston’s stepdaughter. Mary served as Annie’s secretary and worked as an artist in her own right. She illustrated several of Annie’s books. They lived at a place called “The Beeches” at Pee Wee Valley, Kentucky. Mary was a direct descendent of Charles McJohnston, the first settler in McCutchanville. Annie Fellows Johnston’s mother was an Erskine, also of McCutchanville.
size: 14" x 8"



16. CIRCULAR ICE FLOE
ARTIST: ANN BURCHFELD McCUTCHAN (OSUCH)
Studied art in Paris and at the Chicago Art Institute.
Daughter of John McCutchan (formally of this community) and Betty Burchfield.
Currently residing in Washington State.
size: 16” x 10”

McCutchanville Community Church

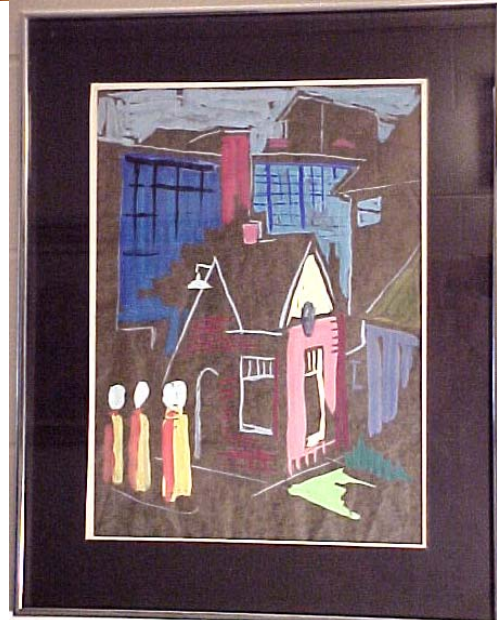
Pictures and Paintings page 6 of 19 Printed 15 September 2005



17. OLD ERSKINE-SWOPE HOUSE ON SWOPE LANE

Watercolor by KENNETH McCUTCHAN 1969
Built by Andrew Erskine. Log portion dated back to 1830s. Remodeled and enlarged after the Civil War. Painting shows the house just before it was razed in 1957.

size: 14" x 10"



18. GASETERIA FILLING STATION AT RIVERSIDE AVE and GOODELL STREET, EVANSVILLE.

Acrylic by EAILY WILSON 1946
Lived in Newburgh and was head of the Art Department at the University of Evansville during the 1940s. Joined the faculty at Indiana university in 1948.

Size: 13" x 18"



19. BARN

Oil by PANSY BLAZE (1889-1971)
Native of Princeton, Indiana. Studied at the John Herron Art Institute in Indianapolis under William Forsythe.

Taught art for many years in Tri-state High Schools.
size: 19 1/2" x 16"

McCutchanville Community Church

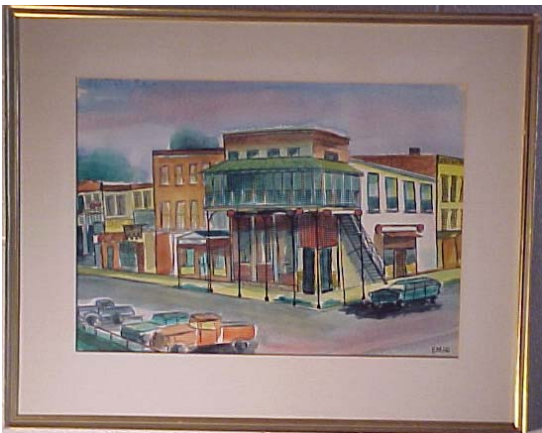
Pictures and Paintings page 7 of 19 Printed 15 September 2005



20. ONION BRIDGE OVER FURLICK CREEK
Watercolor by JERRY BAUM 1969
This was the old iron bridge over Furlick Creek for about a century. It was a community landmark for about a century.
It was removed in January 1975.
size: 20" x 13 1/2"



21. EEL RIVER FLOWING INTO WHITE RIVER
Oil by J.H. GRAHAM
Nothing is known of this artist, but it is believed that he may have been one of the itinerant artists who traveled about the country painting on location at carnivals and fairs. This painting seems to have been done at Bruceville, Indiana and the price on the back, \$1..95.
size: 23 1/2 " x 11 1/2"



22. WATER STREET IN NEWBURG
Watercolor by MARY ELLEN EMIG (contemporary)
Art teacher at Memorial High School for many years.
Exhibited widely and winner of several awards.
(The building in this painting burned in March 1976)
size 19" x 13 1/2"



23. MY OLD SUMMER KITCHEN
Watercolor by JON RIGSLEY
Contemporary Evansville artist. Retired head of art Department at Keller-Crescent.
This painting was done November 1977, during an art seminar held at the Ken McCutchan farm by the nationally known artist, Tony Van Hasselt.
size: 18" x 11"

McCutchanville Community Church
Pictures and Paintings page 8 of 19 Printed 15 September 2005



24. ATCHESON HALL
ARTIST: EVELYN RIGGS
oil
size: 25 1/2" x 19 1/2 "



25. FOLK ART STENCIL
on masonite
size: 30" x 24



26. ST. JAMES EAST METHOSIST CHURCH
ARTIST: ELLINOR GOLDMAN
watercolor-1993
size: 11 1/2" X 9"

McCutchanville Community Church
Pictures and Paintings page 9 of 19 Printed 15 September 2005



27. McJOHNSON CHAPEL
ARTIST: BETTY SWANSON
Original Ink Sketch
size: 13" x 10"



28. CRUCIFIXION OF CHRIST
ARTIST: E. OSCAR THALINGER
(SWISS ARTIST)
oil on masonite (frame broken)
size: 34 1/2" x 27"



29. OLD TIME BUTCHERING DAY
Oil by GERALD L. NEES
Born in Cory, Indiana in 1938. Nees was paralyzed from the neck down after a swimming accident when he was 15 years old. He painted by holding the brush in his teeth.
size: 28" x 18"



30. MIST ON MOUNTAIN
ARTIST: VERA McCUTCHAN
oil-1994
size: 16" x 12"

McCutchanville Community Church

Pictures and Paintings page 10 of 19 Printed 15 September 2005



31. CHALET AND SKIERS IN SNOW
ARTIST: VERA McCUTCHAN
oil 1997
size: 20" x 16"



32. CABIN IN SPRING
ARTIST: VERA McCUTCHAN
oil 1994
size: 20" x 16"



33. WINTER SABBATH
ARTIST: JERRY BAUM
watercolor
(drawn from Moffett Lane 1968)
size: 24" x 17"

McCutchanville Community Church

Pictures and Paintings page 11 of 19 Printed 15 September 2005



34. HAYSTACK AND CHICKENS
ARTIST: NELSON WILSON 1890-1915
oil (from the artist's estate)
size: 15 1/2" x 12"



35. BANK AND RIVER (on back of picture 34)
ARTIST: NELSON WILSON 1890-1915
oil (from the artist's estate)
size: 15 1/2" x 12"



36. TREES IN SNOW
ARTIST: MARY JOHNSTON
Stepdaughter of Annie Fellows Johnston
etching
size: 4 1/2" x 5"

McCutchanville Community Church

Pictures and Paintings page 12 of 19 Printed 15 September 2005



37. FALL FARM SCENE
ARTIST: KENNETH McCUTCHAN
oil (unframed)
size: 16" x 12"



38. CHRISTMAS EVE
ARTIST: BEULHAH H. BROWN
watercolor framed in 1892
size: 23 1/2" x 17 1/2 "



39. "WILLIAM ATCHESON Jr.
1816 – 1864"
Photograph size: 8" x 10"
Picture & Plaque in Atcheson Hall / Dining
Room
"Born and educated in Ireland William Atcheson
Jr. immigrated to McCutchanville in 1837.
Farmer, teacher, ordained preacher and Civil war
Chaplain. Rev Atcheson organized our first
Sunday school in 1842.
This hall is gratefully and humbly dedicated to
William Atcheson Jr's memory and to the
countless unnamed pioneers who also served and
worshipped at McCutchanville Methodist Church.
Their silent witness sounds across the years."

McCutchanville Community Church

Pictures and Paintings page 13 of 19 Printed 15 September 2005



40. Size 5 1/2" x 8 1/2"
Artist Jerry Baum



41. Size 16" x 12"
Artist Kenneth McCutchan



42. Size 16" x 12"
"A Walk To The Top Of The Ridge"
Artist Kenneth McCutchan



43. Size 16" x 12"
Artist Kenneth McCutchan

McCutchanville Community Church

Pictures and Paintings page 14 of 19 Printed 15 September 2005



44. Size 16" x 12"
"Horizontal and Vertical"
Artist Kenneth McCutchan



45. Size 12" x 16"
Artist Kenneth McCutchan



46. Size 12" x 16"
Artist Kenneth McCutchan



47. Size 16" x 12"
Artist Kenneth McCutchan

McCutchanville Community Church

Pictures and Paintings page 15 of 19 Printed 15 September 2005



48. Size 16" x 20"
Kenneth McCutchan
1984
Artist Warren Longmire



49. Size 18" x 14"
"Zest Zinnias"
Artist Madge Hornby Grote



50. Size 6" x 8 1/2"
Artist Jerry Baum



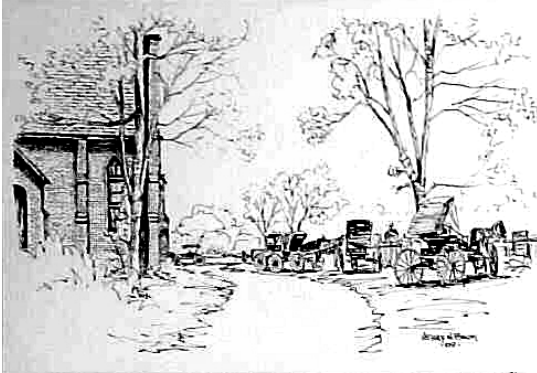
51. Size 8" x 11"
Big Ben
London England
Artist Jerry Baum
Original Felt-tip Pen Sketch

McCutchanville Community Church

Pictures and Paintings page 16 of 19 Printed 15 September 2005



52. Size 12" x 9"
Artist Jerry Baum



53. Size 6" x 4"
Artist Jerry Baum



54. Size 6" x 4"
Artist Jerry Baum
Print & Negative



55. Size 18" x 14"
"Sheep Farm"
Artist Betty Mossman
1988 Tueson & Swartz Creek

McCutchanville Community Church

Pictures and Paintings page 17 of 19 Printed 15 September 2005



56.



57. Charles Wesley
Print of Sketch
20/500
10" x 13"
by Cokesbury



58. Francis Asbury
Print of Sketch
20/500
10" x 13"
by Cokesbury

McCutchanville Community Church

Pictures and Paintings page 18 of 19 Printed 15 September 2005



59. Jacob Albright
Print of Sketch
20/500
10" x 13"
by Cokesbury



60. John Wesley
Print of Sketch
20/500
10" x 13"
by Cokesbury



61. Philip William Otterbein
Print of Sketch
20/500
10" x 13"
by Cokesbury



62. Susanna Wesley
Print of Sketch
20/500
10" x 13"
by Cokesbury

McCutchanville Community Church

Pictures and Paintings page 19 of 19 Printed 15 September 2005



63. Thomas Coke
Print of Sketch
20/500
10" x 13"
by Cokesbury



64. William KcKendree
Print of Sketch
20/500
10" x 13"
by Cokesbury

The narration of these paintings was written by Kenneth McCutchan.